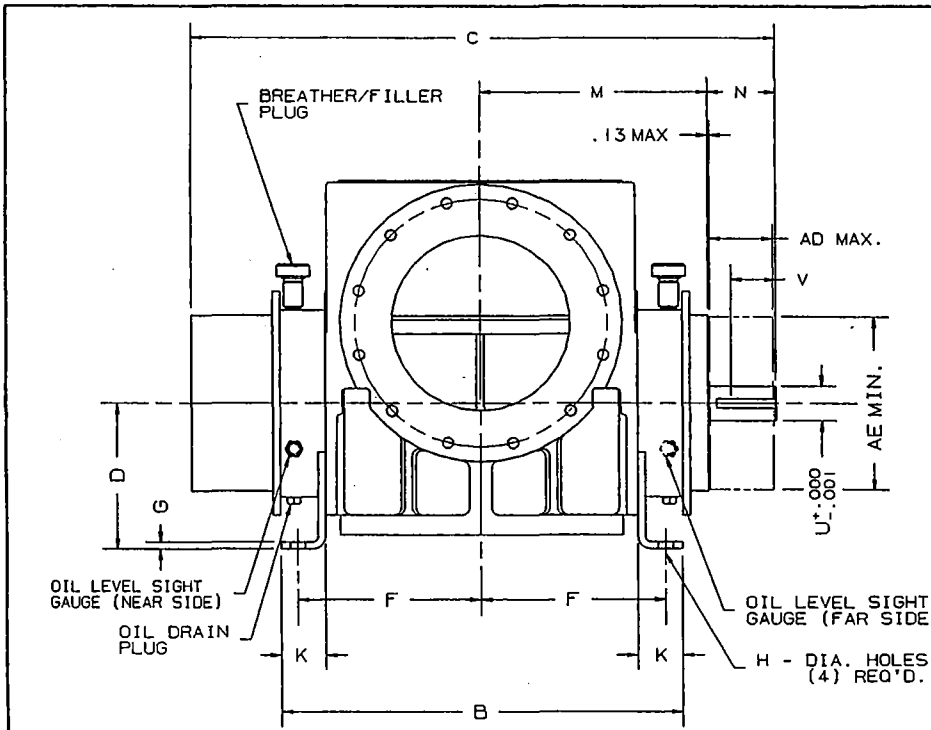


- NOTES:**
1. DRIVE END COVER TO BE PINNED TO HEADPLATE AFTER ALIGNING SEAL BORE TO SHAFT WITHIN .001"
 2. USE JOHN CRANE PLASTIC LEAD No. 2 ON ALL PIPE THREADS
 3. APPLY OIL TO NUT THREADS & NUT FACE AND TORQUE TO 1250 FT-LBS. (IF MOLYKOTE GN PASTE IS USED TORQUE TO 1000 FT-LBS.)
 4. APPLY LOCKTITE TO SCREW THREADS & TORQUE TO 140 FT-LBS.
 5. APPLY LOCKTITE TO SCREW THREADS & TORQUE TO 25 FT-LBS.
 6. APPLY OIL TO SCREW THREADS & TORQUE TO 85 FT-LBS.
 7. ITEMS 34 & 54 MUST BE INSTALLED WITH OIL GROOVE AT TOP.

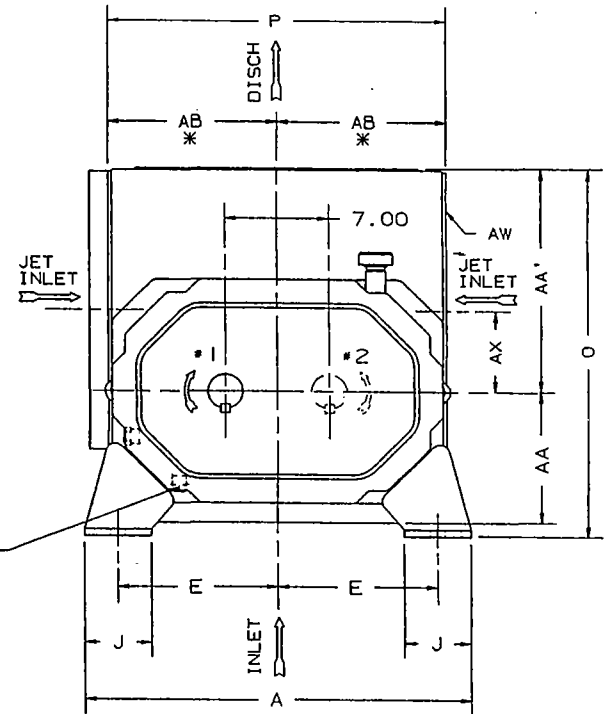
OPTIONAL BOTTOM DRIVE

<p>CONFIDENTIAL THIS DOCUMENT CONTAINS CONFIDENTIAL INFORMATION OF DRESSER DIVISION, DRESSER INDUSTRIES, INC. IT SHALL BE HELD IN STRICTLY CONFIDENTIAL AND BE LOANED ONLY IN CONNECTION WITH DRESSER DIVISION BUSINESS.</p>		<p>SECTIONAL ASSEMBLY 700 (725-1)</p>	
<p>REV. 01 (10/81) REV. 02 (02/83) REV. 03 (05/81)</p>	<p>REVISED PER DDV REVISED: OIL, SHIMMED</p>	<p>DATE/REV. 1 DATE/REV. 2 DATE/REV. 3</p>	<p>DATE/REV. 4 DATE/REV. 5 DATE/REV. 6</p>
<p>APP. 0000 1. APPROVED 2. CHECKED 3. DESIGNED 4. DRAWN 5. ENGINEER</p>	<p>6. DIMENSIONS 7. DIMENSIONS 8. DIMENSIONS 9. DIMENSIONS 10. DIMENSIONS</p>	<p>11. DIMENSIONS 12. DIMENSIONS 13. DIMENSIONS 14. DIMENSIONS</p>	<p>15. DIMENSIONS 16. DIMENSIONS 17. DIMENSIONS 18. DIMENSIONS</p>
<p>DRESSER Roots</p>		<p>72015023</p>	

Sectional Assembly 700 DVJ



* TO FACE OF JET INLET FLANGE
 JET INLET OPENING LOCATED ON
 BOTH SIDES OF BLOWER. ONLY
 ONE SIDE TO BE USED AS JET
 INLET. OTHER OPENING TO BE
 CLOSED WITH STEEL COVER PLATE,
 SUPPLIED BY ROOTS.



POSITION #1 FURNISHED
 UNLESS SPECIFIED OTHERWISE
 ALTERNATE POSITION #2
 ALSO AVAILABLE

INLET AND DISCHARGE FLANGES TO MATE
 FLUSH AND SQUARE WITH FLAT FACE
 FLANGES ONLY. USE FULL FACE GASKETS

FOR V-BELT DRIVEN UNITS
 MOTOR TO BE LOCATED ON
 DRIVE SHAFT SIDE OF BLOWER

	12"FLG
OPENING	12.00
BOLT CIRCLE	17.00
FLANGE O.D.	19.00
NO TAPPED HOLES	12
SIZE HOLES	7/8-9
TAP DEPTH	1.31

W - INLET & DISCHARGE
 AD - SHEAVE WIDTH
 AE - SHEAVE DIAMETER
 AW - JET INLET

700 DVJ-H DRY VACUUM WHISPAIR BLOWER

ALL DIMENSIONS IN INCHES

FRAME SIZE	A	B	C	D	E	F	G	H	J	K	M	N	O	P	U	V	KEYWAY	W	AA	AA'	AB	AD	AE	AW	AX	APPROX. WEIGHT
721	26.00	27.00	39.38	10.00	10.75	12.38	.50	1.00	4.50	3.00	15.25	4.56	25.25	22.75	2.375	3.00	.625 x .313	12"FLG	9.00	15.25	11.38	4.43	11.80	12"FLG	5.50	1750

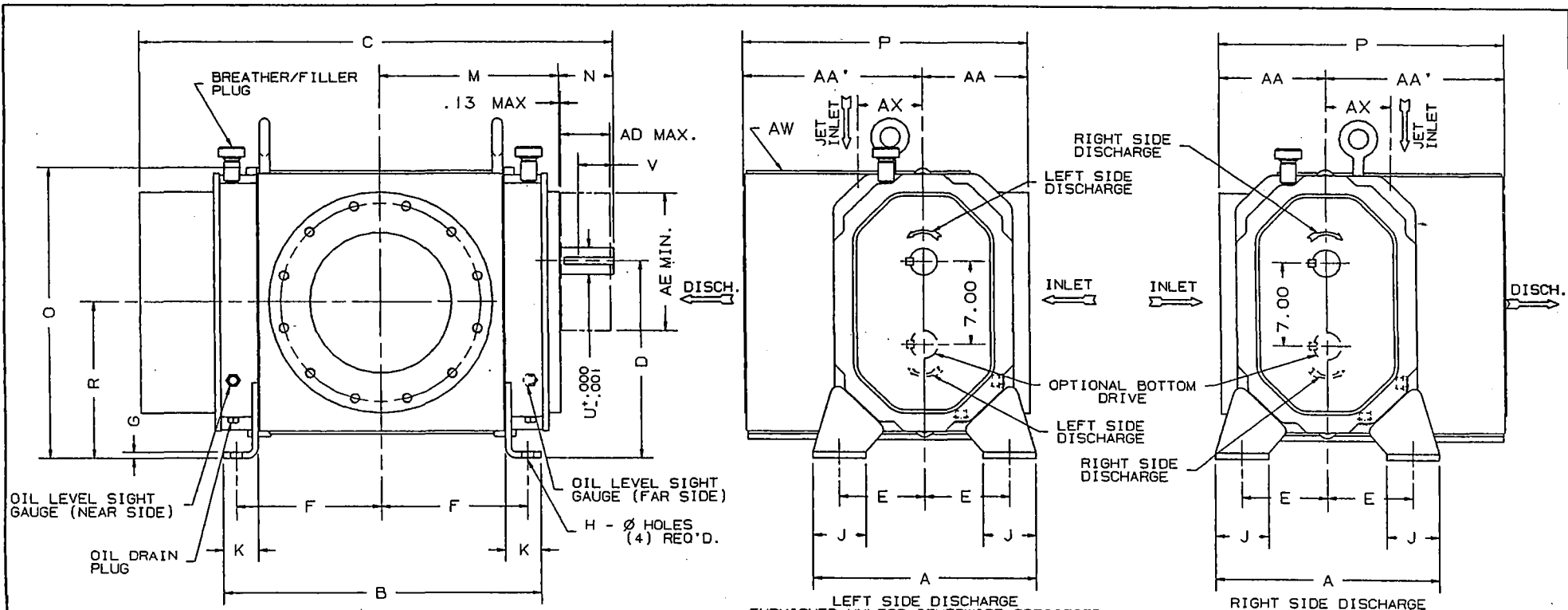
CERTIFIED CORRECT FOR
 CUSTOMER ORDER No. _____
 ROOTS ORDER No. _____
 DATE _____

V-BELT DRIVE DATA	
BELTS	
DRIVE SHEAVE	
DRIVEN SHEAVE	
CENTER DISTANCE	
A-REVISED APPROX. WEIGHT	JHB 11-9-93
REVISIONS	



DRESSER INDUSTRIES, INC
 ROOTS DIVISION
 900 WEST MOUNT STREET
 CONNERSVILLE, INDIANA 47331

RE DR 2/10/93
 CHKD DB APP RDA
873-983-021



INLET AND DISCHARGE FLANGES TO MATE FLUSH AND SQUARE WITH FLAT FACE FLANGES ONLY. USE FULL FACE GASKETS

FOR V-BELT DRIVEN UNITS MOTOR TO BE LOCATED ON INLET SIDE OF BLOWER

	12"FLG
OPENING	12.00
BOLT CIRCLE	17.00
FLANGE O.D.	19.00
No TAPPED HOLES	12
SIZE HOLES	7/8-9
TAP DEPTH	1.31

W - INLET & DISCHARGE
 AD - SHEAVE WIDTH
 AE - SHEAVE DIAMETER
 AW - JET INLET

700 DVJ DRY VACUUM WHISPAIR BLOWER

ALL DIMENSIONS IN INCHES

FRAME SIZE	A	B	C	D	E	F	G	H	J	K	M	N	O	P	R	U	V	KEYWAY	W	AA	AA'	AD	AE	AW	AX	APPROX. WEIGHT
721	19.00	27.00	39.38	17.00	7.25	12.38	.50	1.00	4.50	3.00	15.25	4.56	24.88	24.25	13.50	2.375	3.00	.625 x .313	12"FLG	9.00	15.25	4.43	11.80	12"FLG	5.50	1750

CERTIFIED CORRECT FOR
 CUSTOMER ORDER No. _____
 ROOTS ORDER No. _____
 DATE _____

V-BELT DRIVE DATA	
BELTS	C-CHGD LIFTING LUGS NEP 10/19/95 1/4 399V
DRIVE SHEAVE	B-REVISED APPROX. WEIGHT JHB 10-21-93
DRIVEN SHEAVE	A-CORRECTED BREATHER RVE 2/24/93
CENTER DISTANCE	REVISIONS

ROOTS DRESSER

DRESSER INDUSTRIES, INC
 ROOTS DIVISION
 900 WEST MOUNT STREET
 CONNERSVILLE, INDIANA 47331

JHB DR 10-21-92 CHKO DB DLB APP 1/9/93 873-962-021