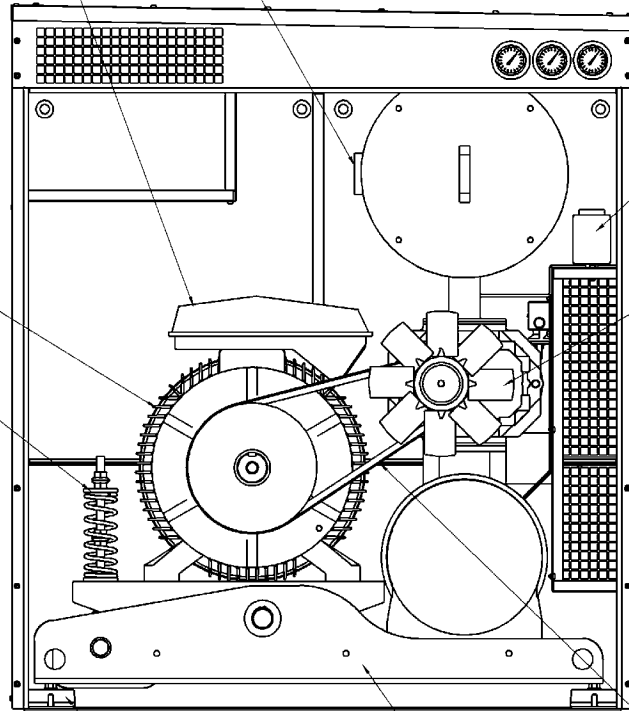


VACUUM RELIEF VALVE CONNECTION  
FOR VACUUM APPLICATIONS  
NOT AVAILABLE ON PRESSURE APPLICATIONS

THE CONDUIT BOX MAY BE  
LOCATED ON THE LEFT SIDE  
IF A NEMA MOTOR IS SUPPLIED  
(IEC MOTOR SHOWN)

ELECTRIC MOTOR

SELF TENSION DEVICE



ISOLATION  
PADS 4 PLACES

BASE PLATE

INLET FILTER SILENCER  
WITH REMOVABLE ELEMENT

OIL FILL  
NOT A RESERVOIR

MECHANICAL  
OPERATED  
EXHAUST FAN

OIL DRAIN PLUG

V-BELT DRIVE  
SEE K#26930  
FOR DRIVE LIMITS

DISCHARGE SILENCER

OPTIONAL CONTROL SWITCHES  
(TEMPERATURE)  
(PRESSURE)  
(VACUUM)

OUTSIDE AIR CONNECTION OPTIONAL  
REQUIRED FOR VACUUM APPLICATIONS

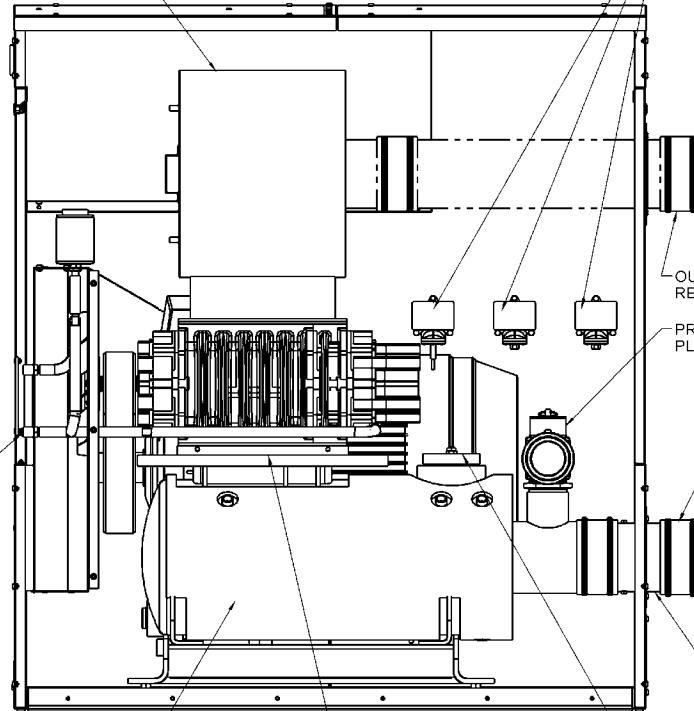
PRESSURE RELIEF VALVE  
PLUGGED FOR VACUUM APPLICATIONS

DISCHARGE CONNECTION

CHECK VALVE

OPTIONAL OIL PAN

UNLOADING VALVE OPTIONAL  
PLUGGED FOR VACUUM APPLICATIONS



CERTIFIED CORRECT FOR	SEE SHEET ONE FOR REV					V-BELT DRIVE DATA
CUSTOMER ORDER No. _____						BELTS
ROOTS ORDER No. _____						DRIVE SHEAVE
DATE _____						DRIVEN SHEAVE
	REVISIONS	BY	CHANGE NOTICE	CHKD.	APP.	CENTER DISTANCE

## DIMENSIONAL ASSEMBLY

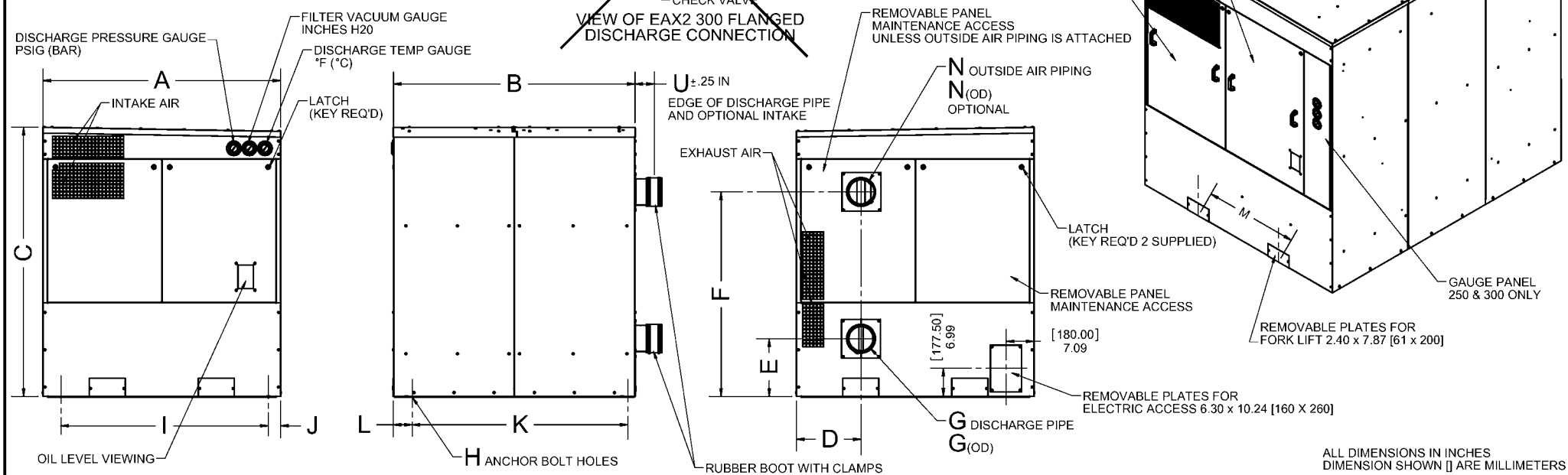
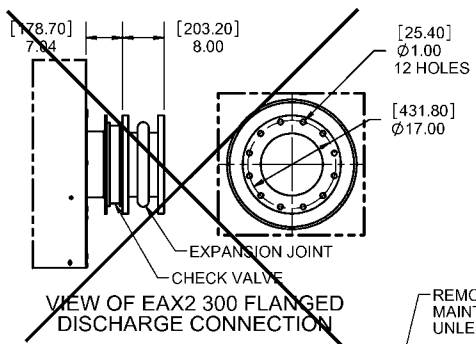
EAX2 50-300  
SHEET 2 OF 3



Dresser Roots, Dresser, Inc.  
Connersville, IN USA

RDR				92522021	REV. C
DR	CHKD	APP			

MODEL	G	G(OD)	N	N(OD)
EAX2 50	2.00 [50]	2.38 [60.3]	3.00 [76.2]	3.50 [88.9]
EAX2 65	2.50 [65]	2.88 [73]	3.00 [76.2]	3.50 [88.9]
EAX2 100	4.00 [100]	4.50 [114]	4.00 [100]	4.50 [114]
EAX2 150	6.00 [150]	6.60 [168]	6.00 [150]	6.60 [168]
EAX2 200	8.00 [200]	8.63 [219]	8.00 [200]	8.63 [219]
EAX2 250	10.00 [250]	10.75 [273]	12.00 [300]	12.75 [323.9]
EAX2 300	12.00 [300]	12" 150# FLG	12.00 [300]	12.75 [323.9]



MODEL	A	B	C	D	E	F	H	I	J	K	L	M	U	BLOWER SIZE	APPROX WEIGHT EXCLUDING MOTOR
EAX2 50	43.31 [1100]	39.36 [1000]	46.25 [1175]	10.88 [276.5]	7.66 [194.5]	33.53 [851.7]	0.78 [20]	37.03 [940.5]	3.14 [79.75]	32.83 [834]	3.27 [83]	23.62 [600]	3.00 [75]	URAI 22, 32, 33, 42	450-525 LBS
EAX2 65	43.31 [1100]	39.36 [1000]	46.25 [1175]	10.88 [276.5]	7.66 [194.5]	33.53 [851.7]	0.78 [20]	37.03 [940.5]	3.14 [79.75]	32.83 [834]	3.27 [83]	23.62 [600]	3.00 [75]	URAI 36, 45, 53	600-650 LBS
EAX2 100	49.21 [1250]	47.24 [1200]	59.05 [1500]	10.45 [265.5]	9.23 [234.5]	46.54 [1182]	0.78 [20]	42.93 [1090.5]	3.14 [79.75]	40.71 [1034]	3.27 [83]	23.62 [600]	3.46 [88]	URAI 47, 56, 59 RAM 404, 406, 409	900-1125 LBS
EAX2 150	60.03 [1525]	61.02 [1550]	67.91 [1725]	16.30 [414]	14.60 [371]	51.65 [1312]	0.78 [20]	53.76 [1365.5]	3.14 [79.75]	54.48 [1384]	3.27 [83]	27.55 [700]	4.84 [123]	RAM X 155, 225, 280	1650-1775 LBS
EAX2 200	66.93 [1700]	70.87 [1800]	80.70 [2050]	19.72 [500.9]	17.96 [456.3]	59.80 [1519]	0.78 [20]	60.65 [1540.5]	3.14 [79.75]	64.33 [1634]	3.27 [83]	33.46 [850]	7.25 [185]	RAM X 400, 500	2425-2550 LBS
EAX2 250	76.77 [1950]	90.55 [2300]	91.53 [2325]	24.25 [614.5]	16.98 [431.4]	69.50 [1765.2]	0.78 [20]	68.77 [1747]	3.99 [101.5]	84.17 [2138]	3.19 [81]	35.83 [910]	10.25 [260]	RAM X 600, 770	3650-3900 LBS
EAX2 300	83.66 [2125]	102.36 [2600]	97.44 [2475]	27.85 [707.5]	19.93 [506.4]	77.17 [1960.1]	0.78 [20]	75.67 [1922]	3.99 [101.5]	95.98 [2438]	3.19 [81]	35.83 [910]	SEE FLG VIEW	RAM X 800, 1000	4950-5450 LBS

CERTIFIED CORRECT FOR	G	UPDATED DIN (D,F,U) & (EAX2 50)	RDR	10495V			V-BELT DRIVE DATA		
CUSTOMER ORDER No.	F	UPDATED DIN (C) & (N 300 ONLY)	RDR	10281V			BELTS		
ROOTS ORDER No.	E	UPDATED HOOD DIM FOR 250 & 300	RDR	10136V			DRIVE SHEAVE		
DATE	D	ADDED (U) & BLOWER SIZE	RDR				DRIVEN SHEAVE		
		REVISIONS	BY	CHANGE NOTICE	CHKD	APP	CENTER DISTANCE		

**DIMENSIONAL ASSEMBLY**  
EAX2 50-300  
SHEET 1 OF 3

**DRESSER Roots**  
Dresser Roots, Dresser, Inc.  
Connersville, IN USA

RDR			
DR	CHKD	APP	

92522021

REV. G