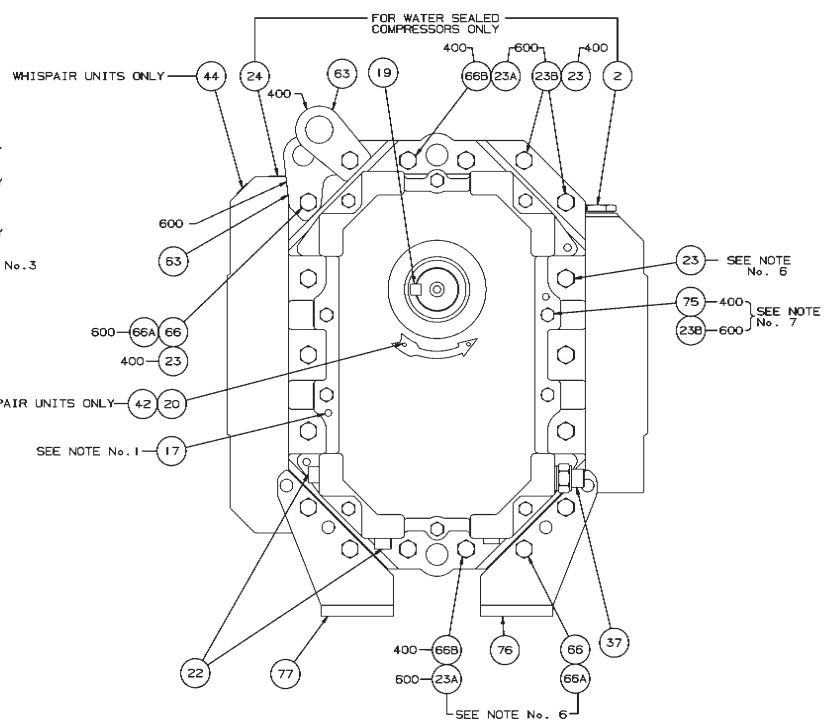
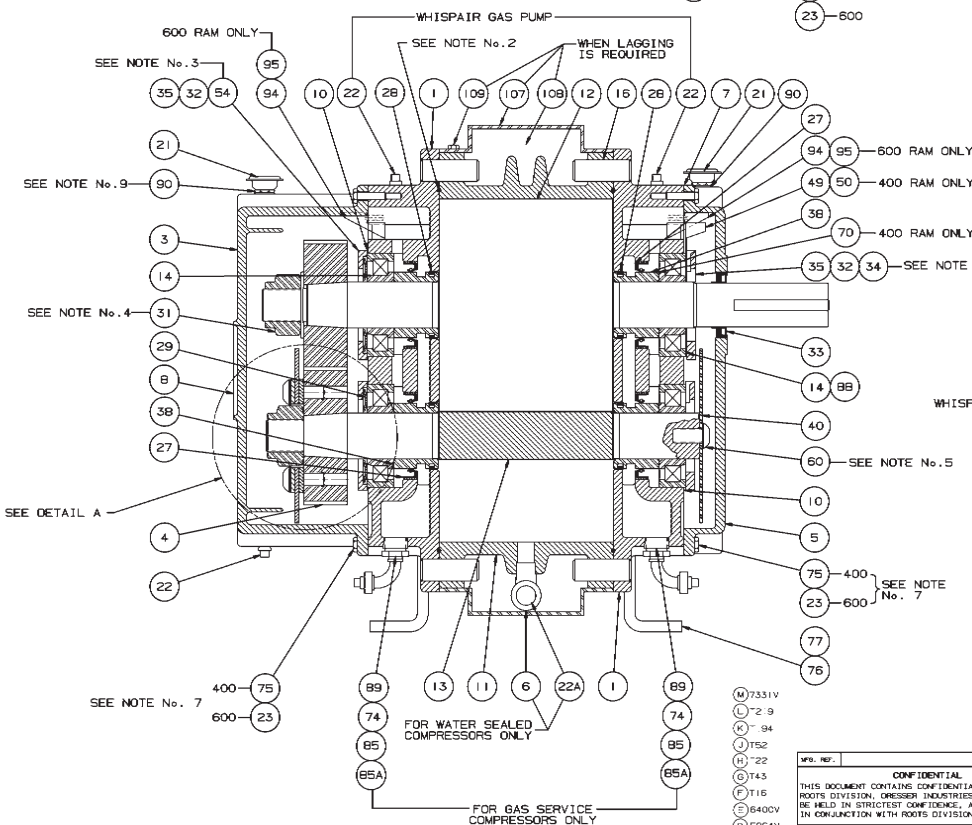
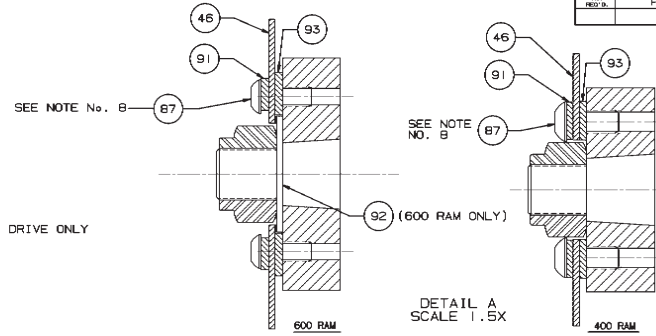
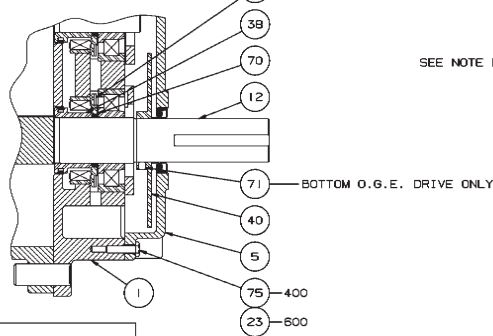


NOTES:

1. DRIVE END COVER TO BE PINNED TO HEADPLATE AFTER ALIGNING SEAL BORE WITH SHAFT WITHIN .001
2. USE TEFLON SEALANT ON ALL PIPE THREADS & CYLINDER TO HEADPLATE FLANGE FOR WHISP AIR GAS PUMP UNITS ONLY.
3. ITEMS 34 & 54 MUST BE INSTALLED WITH OIL GROOVE AT TOP.
4. TORQUE TO 400 FT.LBS. -400
TORQUE TO 630 FT.LBS. -600
5. TORQUE TO 75 FT.LBS. -400
TORQUE TO 140 FT.LBS. -600
APPLY LOCKTITE TO SCREW THREADS & BOTH FACES OF WASHER & SLINGER.
6. TORQUE TO 35 FT.LBS. (HEADPLATE)
7. TORQUE TO 10 FT.LBS. (GEARBOX/END COVER)
8. LOCKTIGHT AND TORQUE TO FT.LBS. -75
9. TWO 1/2 X 3/4 BUSHINGS FOR BREATHERS ON 600 RAM SERIES ONLY

BOTTOM DRIVE OPTION

ALSO SHOWN AS GAS SERVICE



- (M) 7331V
- (L) 2-9
- (K) 94
- (J) T52
- (H) 22
- (G) T43
- (F) T16
- (E) 6400V
- (D) 5964V
- (C) 5767V
- (B) 5950V
- (A) 5C45V

MFG. REF.		DATE		DRESSER PART No.		MATERIAL	
<p style="text-align: center;">CONFIDENTIAL</p> <p>THIS DOCUMENT CONTAINS CONFIDENTIAL INFORMATION OF ROOTS DIVISION, DRESSER INDUSTRIES, INC. IT SHALL BE HELD IN STRICTEST CONFIDENCE, AND BE USED ONLY IN CONNECTION WITH ROOTS DIVISION BUSINESS.</p>							
S	BOTT. DRIVE OPTION SLINGER REVERSE	DAB	7/15/57	8203V		DR. NEP	1/26/58
R	REVISED GEAR END SLINGERS	ANP	1-2-58	7054V		DR. DMS	1/26/58
3	ADDED NOTE TO ITEM 50 & 70	ANP	12-2-58	7591V		DR. RDA	1/26/58
13	MOVED LIFTING LUG	ANP	4-5-59	7450V		DR. NEP	1/26/58
3	ADDED 66B	RDR	3-8-59	7412V		DR. NEP	1/26/58
V	ADDED LAGGING	TC	2/2/59	7331V		DR. NEP	1/26/58
REVISIONS		BY	DATE	CHECKED	DRD	APP	XASR
<p style="text-align: center;">SECTIONAL ASSEMBLY</p> <p style="text-align: center;">430/630 RAM</p>							
<p style="text-align: center;">RAM/RAM-J/RAM-GJ/RAM-VJ</p> <p style="text-align: center;">DO NOT SCALE FOR DIMENSIONS</p> <p style="text-align: center;">ALL DIMENSIONS ARE IN INCHES UNLESS OTHERWISE SPECIFIED</p> <p style="text-align: center;">FRACTIONS SHALL BE PLACED OVER THE DENOMINATOR</p>							
<p>REF: EP308</p> <p>CF PLAINES</p> <p>AMPLIANTY</p> <p>PARALLELE</p> <p>TRIE POSITION</p> <p>STRAIL BUSINESS</p>		<p>CONCENTRICITY</p> <p>PERPENDICULARITY</p> <p>PROFILE OF LINE</p> <p>PROFILE OF A SURFACE</p> <p>DIAMETER</p> <p>FINISH IN MICRO INCHES</p>		<p style="text-align: center;">DRESSER</p> <p style="text-align: center;">Roots</p> <p style="text-align: center;">Dresser, Roots & Dresser, Inc.</p> <p style="text-align: center;">HOUSTON, TEXAS</p>			
81881023						REV S	

Assembly of RAM Series - Air & Gas Blowers

