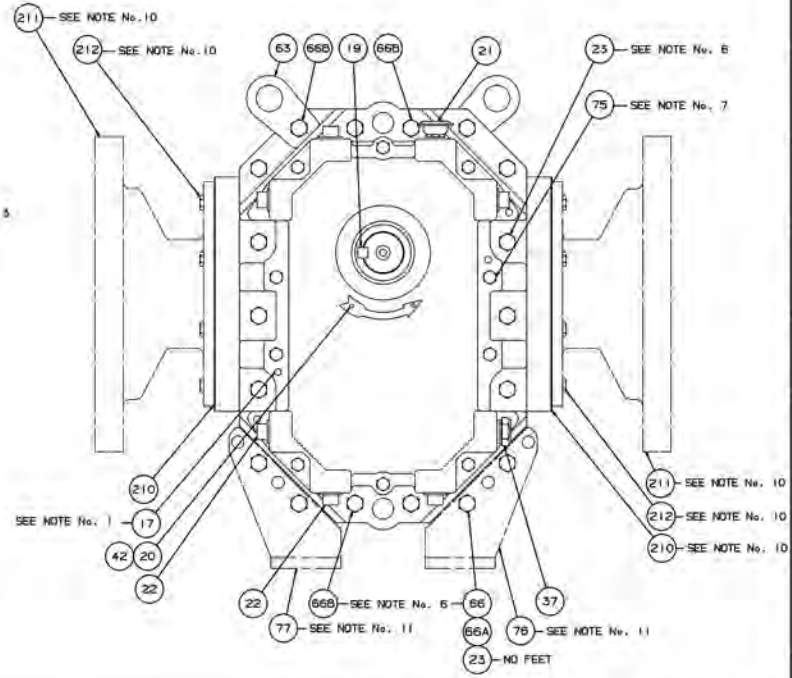
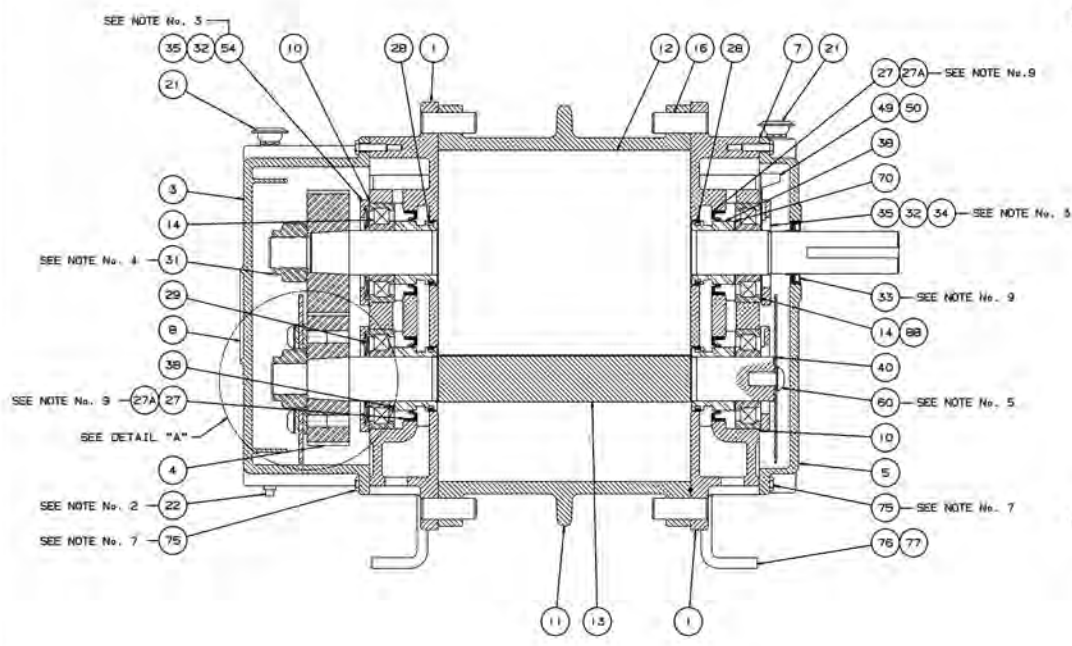
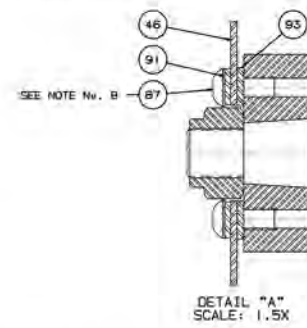
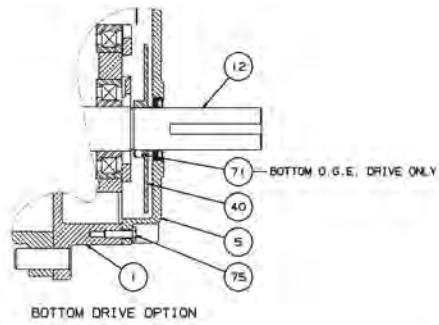


REV.	PART NAME	REV. NO.	DATE

NOTES:

1. DRIVE END COVER TO BE PINNED TO HEADPLATE AFTER ALIGNING SEAL BORE WITH SHAFT WITHIN .001 (.025 MM)
2. USE TEFLON SEALANT ON ALL PIPE THREADS.
3. ITEMS 34 & 54 MUST BE INSTALLED WITH OIL GROOVE AT TOP
4. TORQUE TO 400 FT.-LBS. (55 KG.M)
5. TORQUE TO 75 FT.-LBS. (10 KG.M) APPLY LOCTITE TO SCREW THREADS & BOTH FACES OF WASHER & SLINGER.
6. TORQUE TO 35 FT.-LBS. (4.8 KG.M) (HEADPLATE)
7. TORQUE TO 10 FT.-LBS. (1.36 KG.M) (GEARBOX / END COVER)
8. LOCKTITE AND TORQUE TO 75 FT.-LBS. (10.2 KG.M)
9. INSTALL PER ROTATION
10. OPTIONAL INLET / DISCHARGE ADAPTERS.
11. OPTIONAL FEET



REV.	REV.	DATE	BY	CHKD.	APP.	DATE	BY	CHKD.	APP.

CONFIDENTIAL

THIS DOCUMENT CONTAINS CONFIDENTIAL INFORMATION OF ROOTS DIVISION, DRESSER INDUSTRIES, INC. IT SHALL BE HELD IN STRICTEST CONFIDENCE, AND BE USED ONLY IN CONNECTION WITH ROOTS DIVISION BUSINESS.

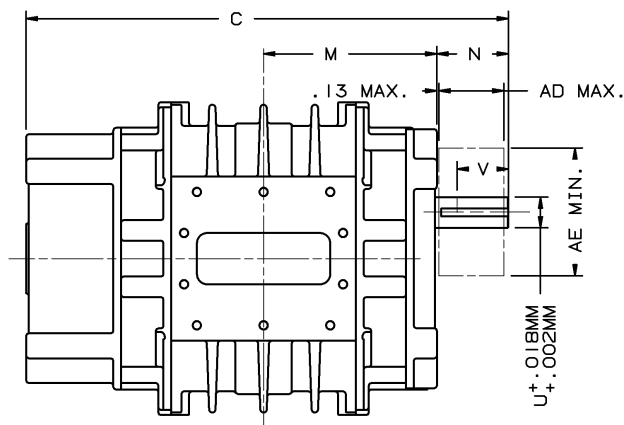
REV.	DESCRIPTION	DATE	BY	CHKD.	APP.
1	ITEM 212 #95 ITEM 123	04/01/01	MS75M	JJ	MS07
2	ADDED OPTIONAL FEET & ADAPTERS	04/01/01	MS05M	JJ	MS07
3	REPT DRIVE OPTION IS JAWB REVERTED	04/01/01	MS05M	JJ	MS07
4	UPDATED TO TRIM IN TRILLION	04/01/01	MS05M	JJ	MS07
5	ADDED ITEM 27A & NOTE 410	04/01/01	MS05M	JJ	MS07
6	ADDED FLANGE GASKET #210	04/01/01	MS05M	JJ	MS07

SECTIONAL ASSEMBLY
MODELS: 155, 225, & 280 RAM 470 TRI-LOBE

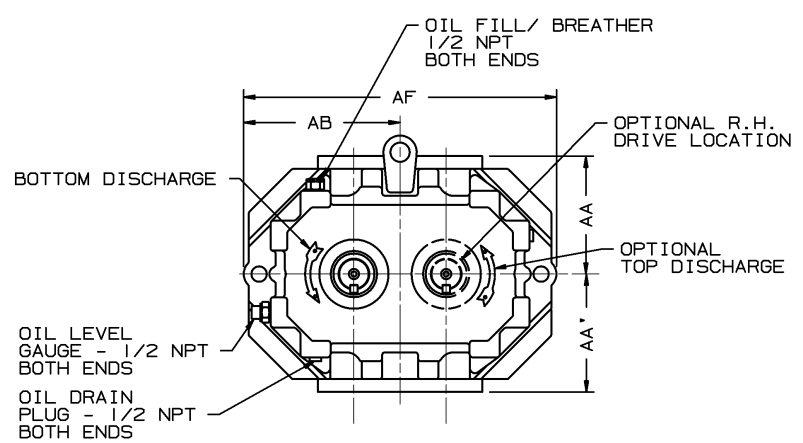
DRESSER
Roots

90860023

Assembly of RAM X™ Tri-Lobe Blowers Models 155, 225, & 280



VIEW OF DISCHARGE



INLET & DISCHARGE FLANGES TO MATE FLUSH & SQUARE WITH FLAT FACE FLANGE ONLY. USE FULL FACE GASKETS.

V-BELT DRIVEN UNITS: MOTOR TO BE LOCATED ON INLET SIDE OF HORIZONTAL FLOW UNITS & ON DRIVE SHAFT SIDE OF VERTICAL FLOW UNITS.

AD - MAXIMUM SHEAVE WIDTH (SEE OVERHUNG LOAD LIMIT K-24102)

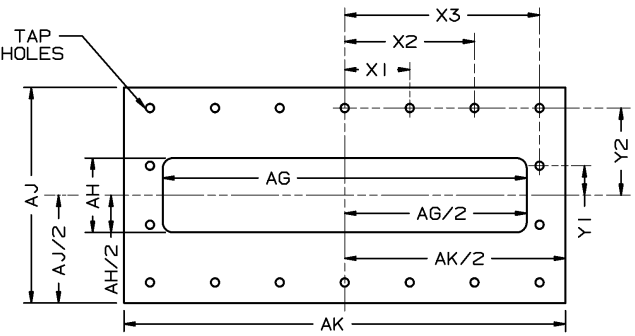
AE - MINIMUM SHEAVE DIAMETER (SEE OVERHUNG LOAD LIMIT K-24102)

ALL DIMENSIONS IN INCHES UNLESS OTHERWISE SPECIFIED METRIC DIMENSIONAL #9074-7021

		DRIVE LOCATION	
		LH	RH
DISCH. LOCATION	TOP	CW	CCW
	BOTTOM	CCW	CW

UNIT IS BUILT TO CUSTOMERS SPECIFIED ORIENTATION

"W" SIZE OF TAP
"Z" No. OF HOLES



MODEL	C	M	N	U MM	V MM	KEYWAY MM	INLET DISCH AAAA'	AB	AD	AE	AF	AG	AH	AJ	AK	JAK	APPROX WEIGHT
155	23.50	8.44	3.50	35.0	63.5	10.0X5.0	5.75 5.75	7.63	3.06	7.10	15.25	6.50	4.00	8.00	9.02	300 LBS	
225	27.50	10.44	"	"	"	"	" "	" "	" "	" "	" "	10.50	"	"	13.02	360 LBS	
280	30.75	12.06	"	"	"	"	" "	" "	" "	" "	" "	13.75	"	"	16.27	420 LBS	
400	33.56	13.08	4.33	50.0	76.2	14.0X5.5	7.25 7.25	10.00	4.44	8.50	20.00	13.75	5.50	10.50	17.36	730 LBS	
500	37.73	15.17	"	"	"	"	" "	" "	" "	" "	" "	17.75	"	"	21.53	850 LBS	

MODEL	X1	X2	X3	Y1	Y2	W	Z
155	3.25		3.88	1.25	3.25	M12x1.75	10
225	2.63	5.25	5.88	1.25	3.25	M12x1.75	14
280	3.50	6.88	7.50	1.25	3.25	M12x1.75	14
400	3.75		7.50	1.44	4.25	M12x1.75	14
500	3.17	6.33	9.50	1.44	4.25	M12x1.75	18

CERTIFIED CORRECT FOR

CUSTOMER ORDER No. _____

ROOTS ORDER No. _____

DATE _____

B	MODELS 155, 225, & 280 "AH" WAS 2.75 MODELS 400 & 500 "AH" WAS 3.69	DAB	8202V														
A	REV. MODEL DESIGNATIONS, REMOVED V. UNITS "C" & "N" DIMS CORRECTED	RDR	800IV														
	REVISIONS	BY	CHANGE NOTICE	CHKD.	APP.												

V-BELT DRIVE DATA



BELTS _____

DRIVE SHEAVE _____

DRIVEN SHEAVE _____

CENTER DISTANCE _____

RAM XTM
TRI-LOBE BLOWERS
MODELS 155 THRU 500

DRESSER   Dresser ROOTS, Dresser, Inc.
Connersville, IN USA

Roots

RDR							
DR	CHKD	APP					

90724021

REV. B

90724A21 XXAD

