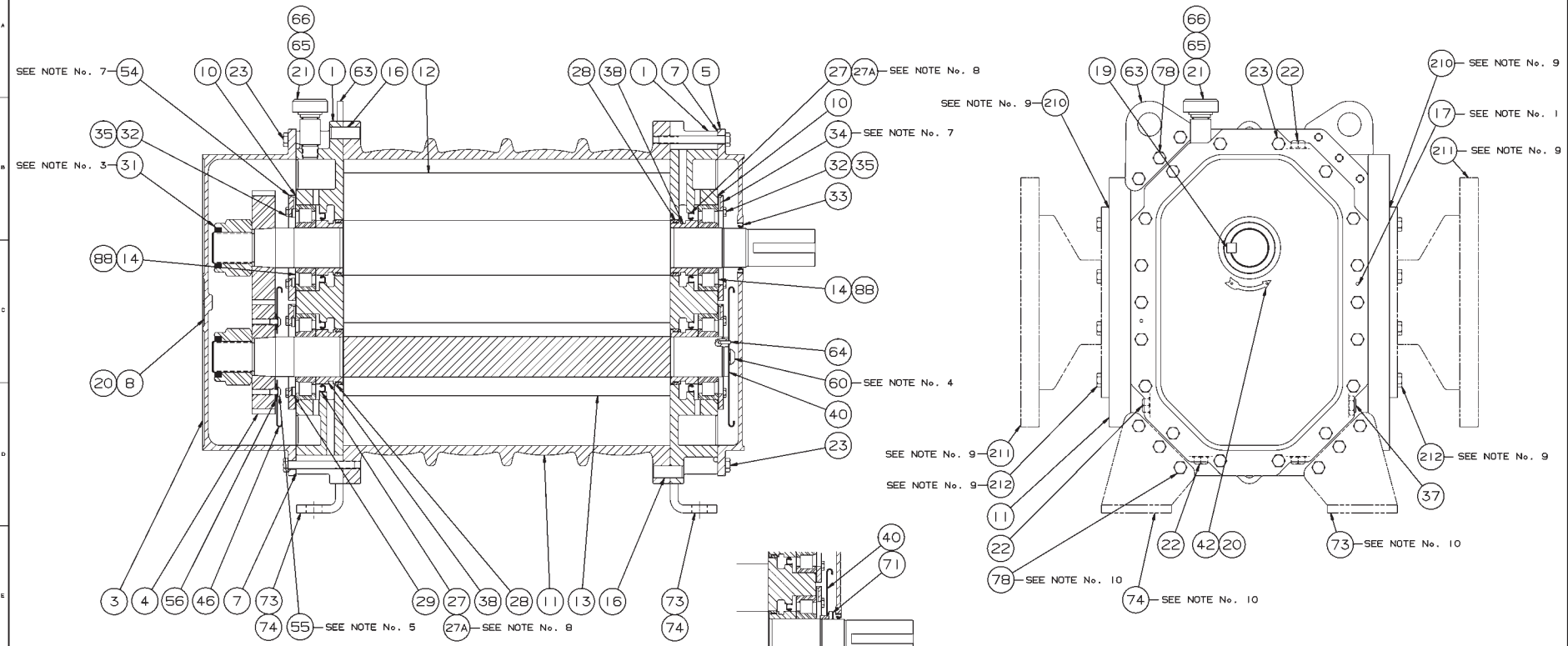


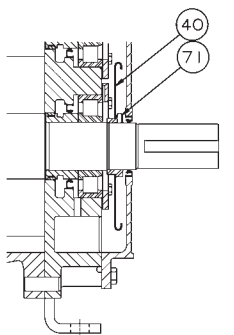
NO. REV.	PART NAME	REV. NO.	MAT'L.



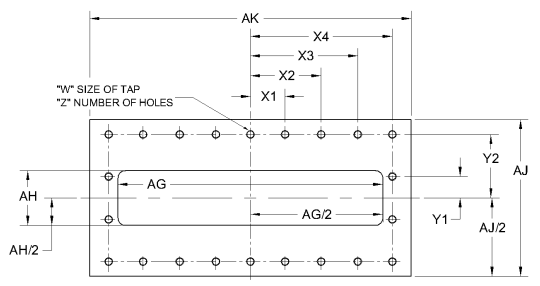
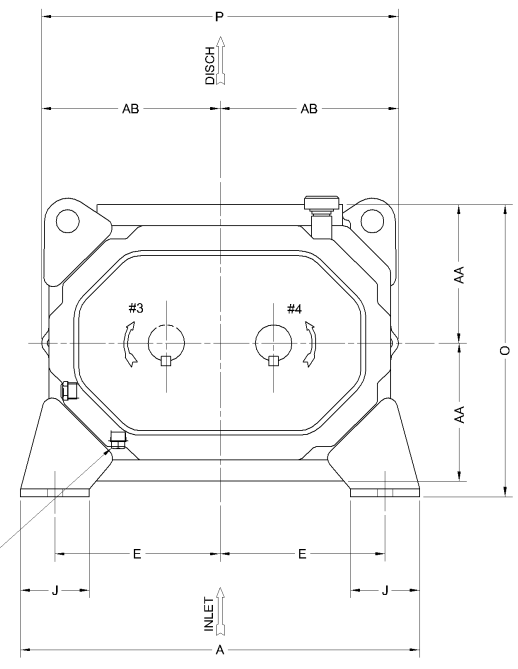
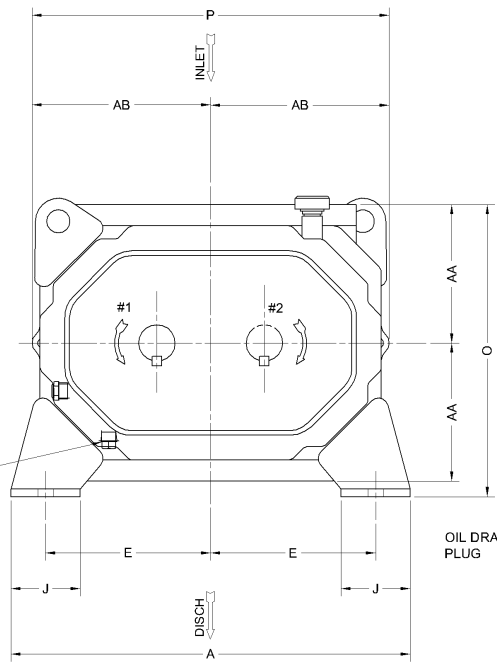
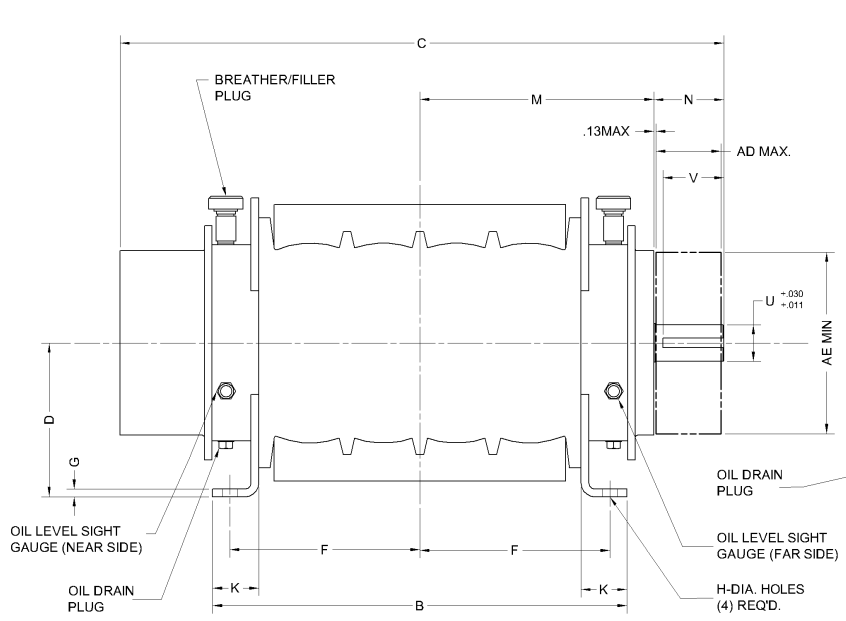
NOTES:

1. DRIVE END COVER TO BE PINNED TO HEADPLATE AFTER ALIGNING SEAL BORE TO SHAFT WITHIN .001"
2. USE LOCTITE 567 ON ALL PIPE THREADS
3. APPLY OIL TO NUT THREADS & NUT FACE AND TORQUE TO 1250 FT-LBS. (173KG.M) (IF MOLYKOTE GN PASTE IS USED TORQUE TO 1000 FT-LBS.) (138 KG.M)
4. APPLY LOCTITE 272 TO SCREW THREADS & TORQUE TO 140 FT-LBS. (19KG.M)
5. APPLY LOCTITE 272 TO SCREW THREADS & TORQUE TO 25 FT-LBS. (3.5KG.M)
6. APPLY OIL TO SCREW THREADS & TORQUE TO 85 FT-LBS. (11.8KG.M)
7. ITEMS 34 & 54 MUST BE INSTALLED WITH OIL GROOVE AT TOP.
8. INSTALL PER ROTATION
9. OPTIONAL INLET / DISCHARGE ADAPTERS.
10. OPTIONAL FEET

OPTIONAL BOTTOM DRIVE



MFG. REF. 72015023		DATE		SCALE 4" = 1'-0"		PROJ. NO.	
CONFIDENTIAL							
THIS DOCUMENT CONTAINS CONFIDENTIAL INFORMATION OF ROOTS DIVISION, DRESSER INDUSTRIES, INC. IT SHALL BE HELD IN STRICTEST CONFIDENCE, AND BE USED ONLY IN CONJUNCTION WITH ROOTS DIVISION BUSINESS.							
REV.	DESCRIPTION	DATE	BY	CHKD.	APP.	SECTIONAL ASSEMBLY MODELS 600 & 770 RAM X™	
D	ITEM 212 WAS ITEM 122	02/75V	DAB	6/17/07		 Roots <small>Roots is a registered trademark of Dresser Industries, Inc. © 2007 Dresser Industries, Inc. All rights reserved.</small>	
C	ADDED OPTIONAL FEET & ADAPTERS	8/9/07	JJ				
B	TITLE BLOCK 770 SIZE DESIGNATION	8/26/07	DAB	6/26/07	8182V		
A	ADDED ITEM 88	5/2/07	RDR	5/2/07	9105V		
REF. EPDSB		O CONCENTRICITY		SIB FILE # / CONNECTION		Dresser ROOTS, Dresser, Inc.	
FLATNESS	J PERPENDICULARITY	BY DATE		92038A23		92038023	
PARALLELISM	K ANGULARITY	CHKD. APP.		XASR		REV D	
TRUE POSITION	L PROFILE OF LINE	DATE					
STRAIGHTNESS	M SURFACE OF A SURFACE	NOTICE					
	N CIRCULAR RUNOUT						
	P FINISH IN MICRO INCHES						



INLET/DISCH FLANGES

MODEL	X1	X2	X3	X4	Y1	Y2	W	Z
600	3.42	6.84	--	10.26	1.67	5.00	M16X2	18
770	3.25	6.50	9.75	13.00	1.67	5.00	M16X2	22

INLET & DISCHARGE FLANGES TO MATE FLUSH & SQUARE WITH FLAT FACE FLANGE ONLY. USE FULL FACE GASKETS.

FOR V-BELT DRIVEN UNITS MOTOR TO BE LOCATED ON DRIVE SHAFT SIDE OF BLOWER

ALTERNATE POSITIONS #2, #3 & #4 ALSO AVAILABLE

AD-SHEAVE WIDTH
AE-SHEAVE DIAMETER

ALL DIMENSIONS IN INCHES EXCEPT AS NOTED

MODEL	A	B	C	D	E	F	G	H	J	K	M	N	O	P	U MM	V MM	KEYWAY MM	AG	AH	AJ	AK	AA	AB	AD	AE	APPROX WEIGHT
600	26.00	28.79	41.17	10.00	10.75	13.27	0.50	1.00	4.50	3.00	16.14	4.56	18.25	23.25	60.00	76.20	18X7	17.50	3.68	12.25	22.75	8.63	11.63	4.43	11.80	1325LB
770	26.00	34.54	46.92	10.00	10.75	16.14	0.50	1.00	4.50	3.00	19.01	4.56	18.25	23.25	60.00	76.20	18X7	22.50	3.68	12.25	28.50	8.63	11.63	4.43	11.80	1540LB

CERTIFIED CORRECT FOR
CUSTOMER ORDER No. _____
ROOTS ORDER No. _____
DATE _____

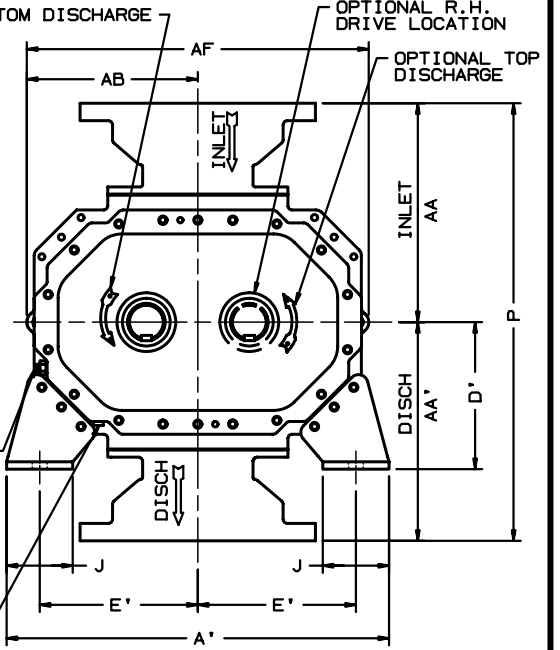
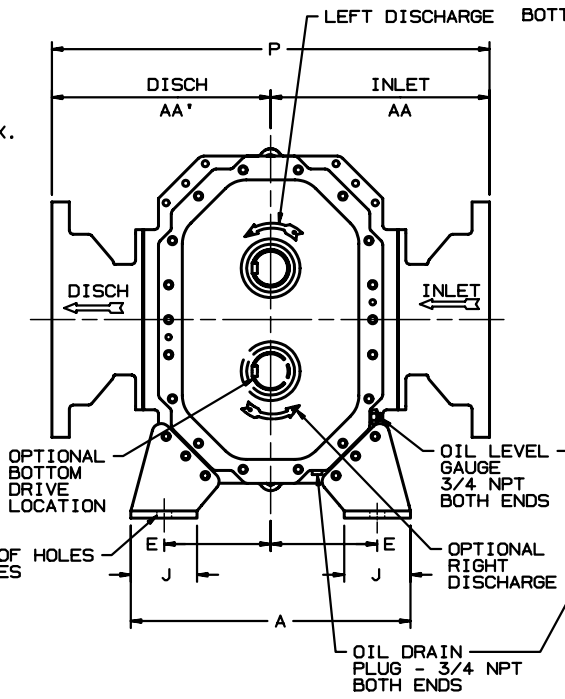
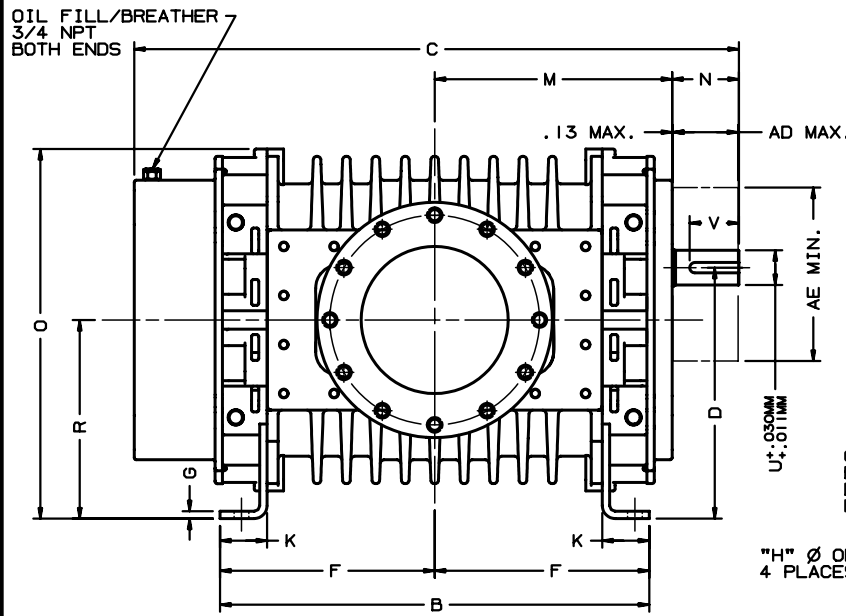
REVISIONS	BY	CHANGE NOTICE	CHKD.	APP.

RAM XTM TRILOBE BLOWERS
MODEL 600 & 770



Dresser ROOTS, Dresser, Inc.
Connersville, IN USA

DR	CHKD	APP	90762021	REV.



INLET & DISCHARGE FLANGES TO MATE FLUSH & SQUARE WITH FLAT FACE FLANGE ONLY. USE FULL FACE GASKETS.

V-BELT DRIVEN UNITS: MOTOR TO BE LOCATED ON INLET SIDE OF BLOWER.

AD - MAXIMUM SHEAVE WIDTH (SEE OVERHUNG LOAD LIMIT K-24102)

AE - MINIMUM SHEAVE DIAMETER (SEE OVERHUNG LOAD LIMIT K-24102)

ALL DIMENSIONS IN INCHES UNLESS OTHERWISE SPECIFIED METRIC DIMENSIONAL *92518021

ANSI FLANGE DIMENSIONS						
	FA	FB	FC	FD	FE	FG
10 FLG	10.00	14.25	16.00	12	88-9	1.19
12 FLG	12.00	17.00	19.00	12	88-9	1.25

- FA - FLANGE OPENING
- FB - FLANGE BOLT CIRCLE
- FC - FLANGE O.D.
- FD - No. TAPPED HOLES
- FE - SIZE OF TAPPED HOLES
- FG - DEPTH OF TAP

		DRIVE LOCATION	
		LH	RH
DISCH. LOCATION	TOP	CW	CCW
	BOTTOM	CCW	CW

UNIT IS BUILT TO CUSTOMERS SPECIFIED ORIENTATION

MODEL	A	A'	B	C	D	D'	E	E'	F	G	H	J	K	M	N	O	P	R	U MM	V MM	KEYWAY MM	INLET AAA'	DISCH AA'	AB	AD	AE	AF	FLANGE SIZE	APPROX WEIGHT
600	19.00	26.00	28.79	41.17	7.00	10.00	7.25	10.75	13.27	.50	1.00	4.50	3.00	16.14	4.56	25.13	29.75	13.5	60.00	76.20	18.0X7.0	14.87	14.87	11.63	4.43	11.80	23.26	10"	1485 LBS
770	"	"	34.54	46.92	"	"	"	"	16.14	"	"	"	"	19.01	"	"	31.88	"	"	"	"	15.94	15.94	"	"	"	"	12"	1805 LBS

CERTIFIED CORRECT FOR CUSTOMER ORDER No. _____ ROOTS ORDER No. _____ DATE _____	V-BELT DRIVE DATA BELTS _____ DRIVE SHEAVE _____ DRIVEN SHEAVE _____ CENTER DISTANCE _____										RAM X™ TRILOBE BLOWERS MODELS 600 & 770				Dresser ROOTS, Dresser, Inc. Connorsville, IN USA				92517021 REV. _____			
	REVISIONS										DR				CHKD				APP			
	BY																					