

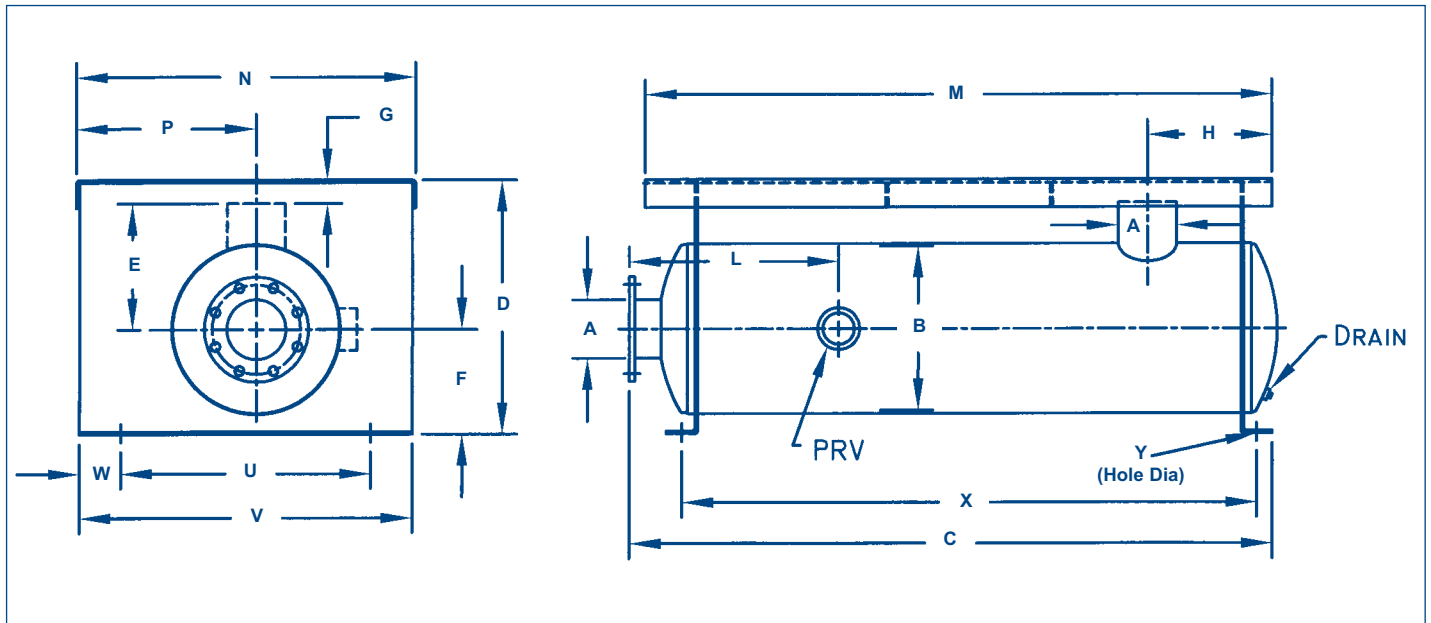
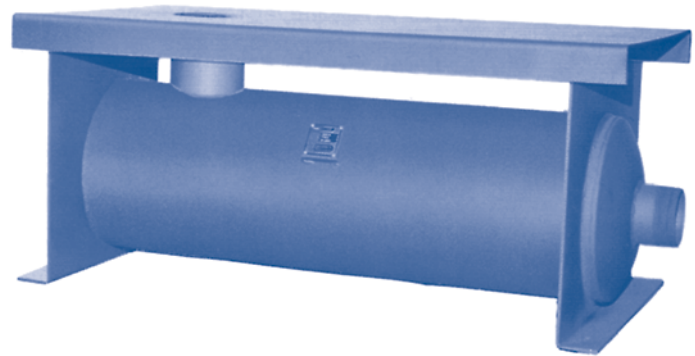
# PD13

## Discharge Silencer

The PD13 is a premium discharge silencer for blowers operating below transition speed, on which the blower, motor and belt guard are mounted as an integral part of the silencer. The PD13 is designed to facilitate package assembly, thereby reducing labor and the overall costs of assembling smaller blower packages. The design also enables the package to be pretested and shipped to the jobsite without any disassembly.

The PD13 incorporates all the benefits of the D13H series silencer seen in Bulletin "D". The inlet is designed to accept a slip-on flex connector. When provided with dimensional data for mounting the blower and motor STODDARD SILENCERS will pre-drill up to twelve (12) holes in the base plate of the PD13 at an additional cost. Blowers, motors, slide rails, drive assemblies and any necessary controls are not included; however, an intake filter silencer, intake silencer with support, flex connectors and belt guard are available as part of PD13 Packages "A", "B" and "C". (Contact the factory for the respective components of these packages). Special flanges, finishes or materials of construction are available at additional cost.

See STODDARD SILENCERS Bulletin "D" for attenuation data for the D13H Discharge Silencer.



MODEL	A*	B	C	D	E	F	G	H	L	M	N	P	U	V	W	X	Y	PRV	WT.
PD13-2	2	8	30	14 <sup>1</sup> / <sub>8</sub>	7	5	2 <sup>1</sup> / <sub>8</sub>	8	12	36	19 <sup>3</sup> / <sub>8</sub>	11 <sup>3</sup> / <sub>16</sub>	12	19	3 <sup>1</sup> / <sub>2</sub>	25	5 <sup>1</sup> / <sub>8</sub> x 7 <sup>1</sup> / <sub>8</sub>	2	95
PD13-2 <sup>1</sup> / <sub>2</sub>	2 <sup>1</sup> / <sub>2</sub>	10	31	15 <sup>5</sup> / <sub>8</sub>	8	6	1 <sup>5</sup> / <sub>8</sub>	8	11	40	26 <sup>3</sup> / <sub>8</sub>	16 <sup>3</sup> / <sub>16</sub>	18	26	4	25 <sup>1</sup> / <sub>2</sub>	5 <sup>1</sup> / <sub>8</sub> x 7 <sup>1</sup> / <sub>8</sub>	2	150
PD13-3	3	10	49 <sup>1</sup> / <sub>2</sub>	17 <sup>3</sup> / <sub>16</sub>	8	7	2 <sup>3</sup> / <sub>16</sub>	8 <sup>3</sup> / <sub>4</sub>	17	48	27 <sup>1</sup> / <sub>2</sub>	15 <sup>1</sup> / <sub>4</sub>	18	27	4 <sup>1</sup> / <sub>2</sub>	44	3 <sup>3</sup> / <sub>4</sub> x 1	2	215
PD13-4	4	14	49 <sup>7</sup> / <sub>8</sub>	21 <sup>1</sup> / <sub>4</sub>	11	8	2 <sup>1</sup> / <sub>4</sub>	13	17	54	31 <sup>1</sup> / <sub>8</sub>	17 <sup>1</sup> / <sub>4</sub>	20 <sup>1</sup> / <sub>2</sub>	30 <sup>1</sup> / <sub>2</sub>	5	44	3 <sup>3</sup> / <sub>4</sub> x 1	2	320
PD13-5	5	16	61 <sup>1</sup> / <sub>2</sub>	24 <sup>1</sup> / <sub>4</sub>	12	10	2 <sup>1</sup> / <sub>4</sub>	12	20	60	32 <sup>5</sup> / <sub>8</sub>	17 <sup>5</sup> / <sub>16</sub>	24	32	4	55	3 <sup>3</sup> / <sub>4</sub> x 1	3	445
PD13-6	6	18	68 <sup>3</sup> / <sub>8</sub>	27 <sup>5</sup> / <sub>16</sub>	13	12	2 <sup>5</sup> / <sub>16</sub>	13	21 <sup>1</sup> / <sub>2</sub>	66	33 <sup>3</sup> / <sub>4</sub>	16 <sup>3</sup> / <sub>8</sub>	24	33	4 <sup>1</sup> / <sub>2</sub>	62	3 <sup>3</sup> / <sub>4</sub> x 1	3	580

\*OUTLET CONNECTIONS: NPT up to 4"  
Flanged 5" and larger